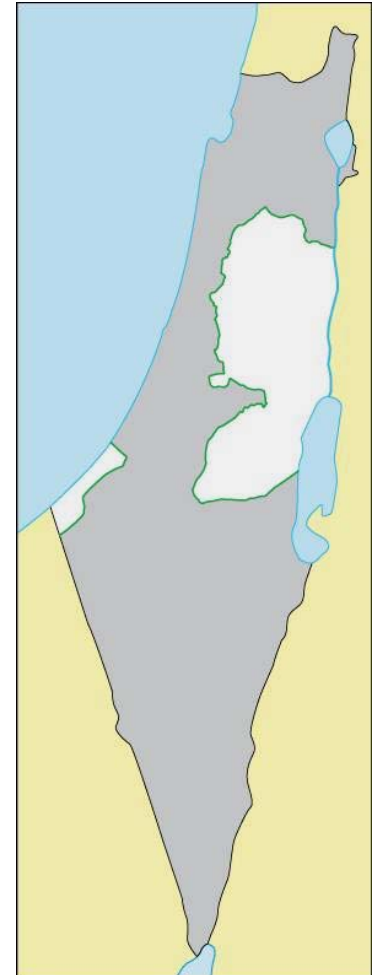




PLO Negotiations Affairs Department

Road Map Implementation

Post-Annapolis Update



PALESTINE LIBERATION ORGANIZATION
Negotiations Affairs Department
Negotiations Support Unit

Today's Presentation

I. Background / Overview

- *Annapolis Process*
- *"Facts on the Ground"*

II. Israeli Road Map Obligations

III. Post-Annapolis Update

Annapolis: Parallel Tracks

➤ Permanent Status Negotiations:

- **Statehood** – fully sovereign, 1967 line
- **East Jerusalem** – capital of Palestine
- **Refugees** – “just & agreed upon” resolution
- **Water** – equitable & reasonable allocation
- **Security** – w/o impinging on sovereignty

➤ Road Map Implementation:

- **Israeli obligations** – settlements, closures
- **Palestinian obligations** – security, reform



'Facts on the Ground'

Israel's Settlement Enterprise

1. Settlements
2. The Wall (and its regime)
3. Settler / by-pass roads
4. Movement restrictions

WB land west of Wall:

9.0%

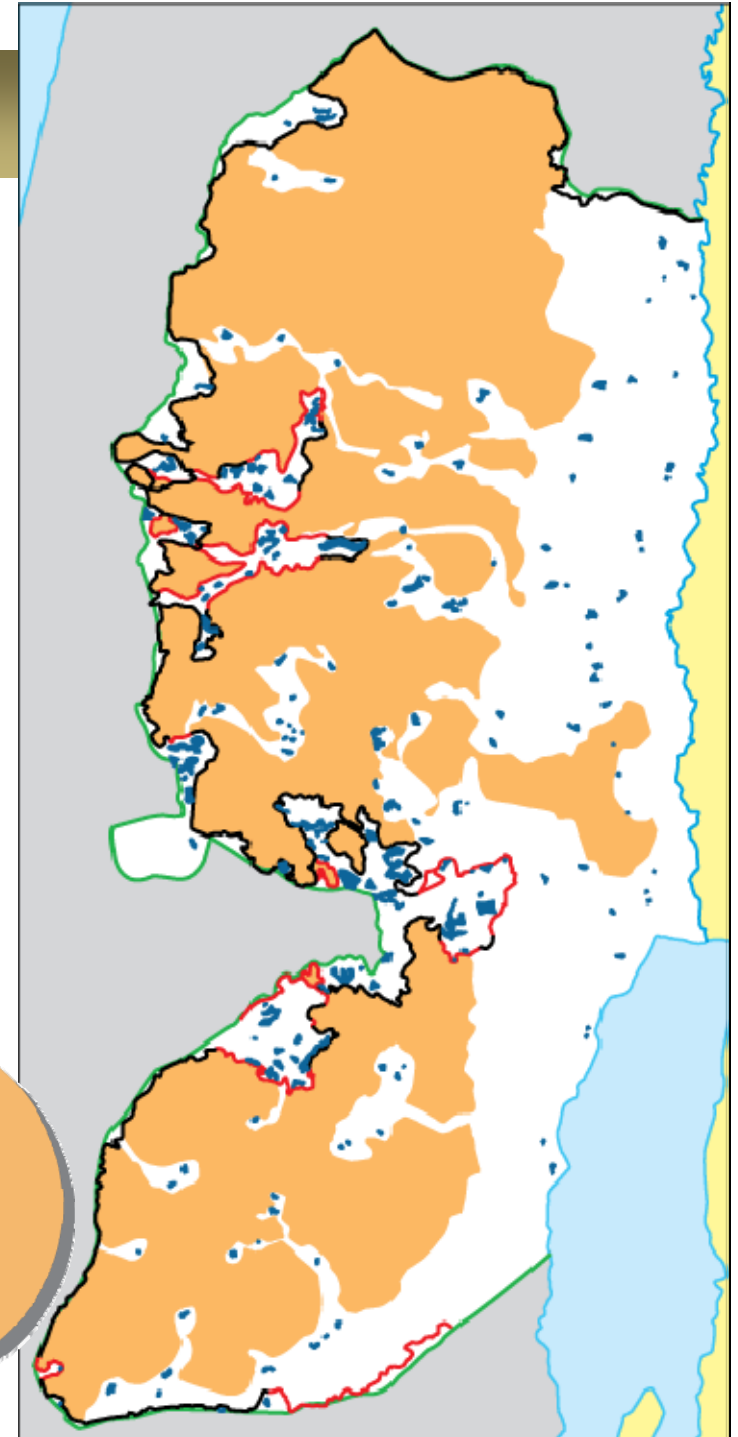
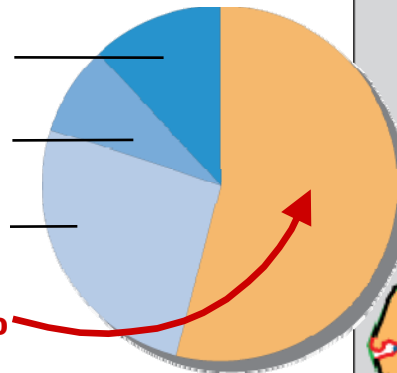
Settlement areas east of Wall:

8.0%

Jordan Valley settlement control:

28.5%

Area remaining for Palestinians: **54.5%**

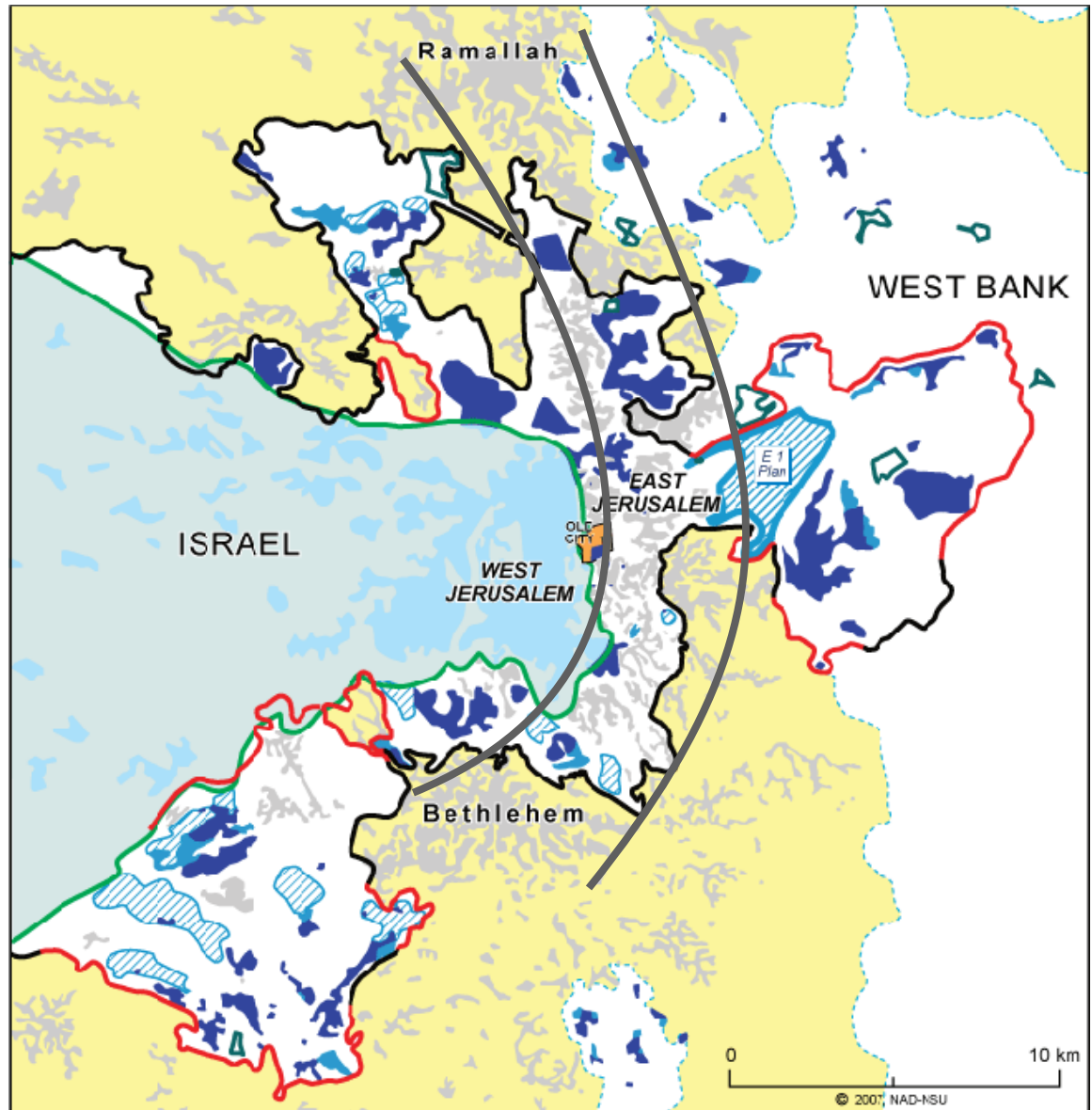


'Facts on the Ground'

Metropolitan Jerusalem

- *Cut off from rest of WB*
- *Internally fragmented*
- *WB severed in two*

No Palestinian state is viable without its capital, East Jerusalem.



The Road Map

Israeli Obligations

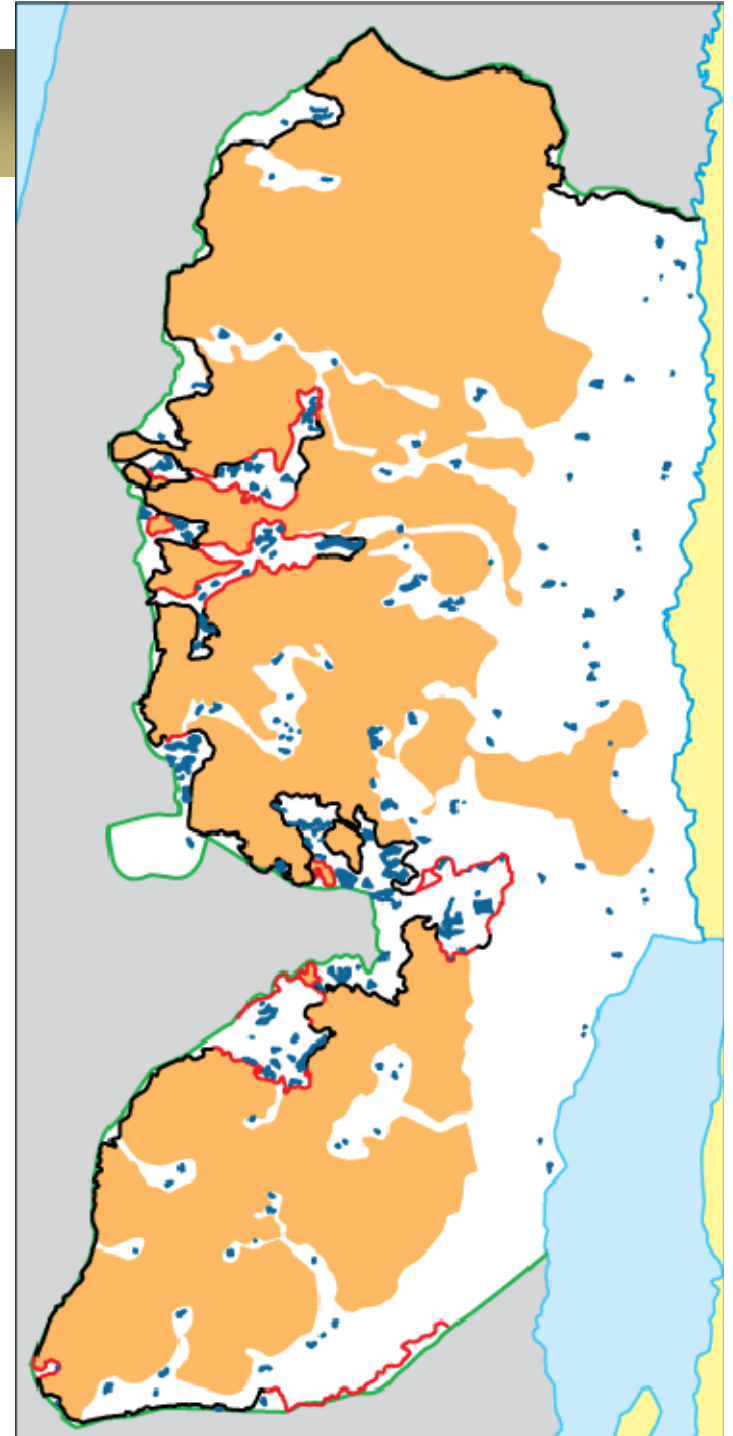


- *Freeze “all settlement activity”*
- *Remove all outposts since Mar. 2001*
- *End attacks on civilians, land confiscations and home demolitions*
- *Reopen Jerusalem institutions*
- *Reaffirm commitment to independent, viable, sovereign state*
- *Call for immediate end to violence*

The Road Map

Elements of a Settlement Freeze

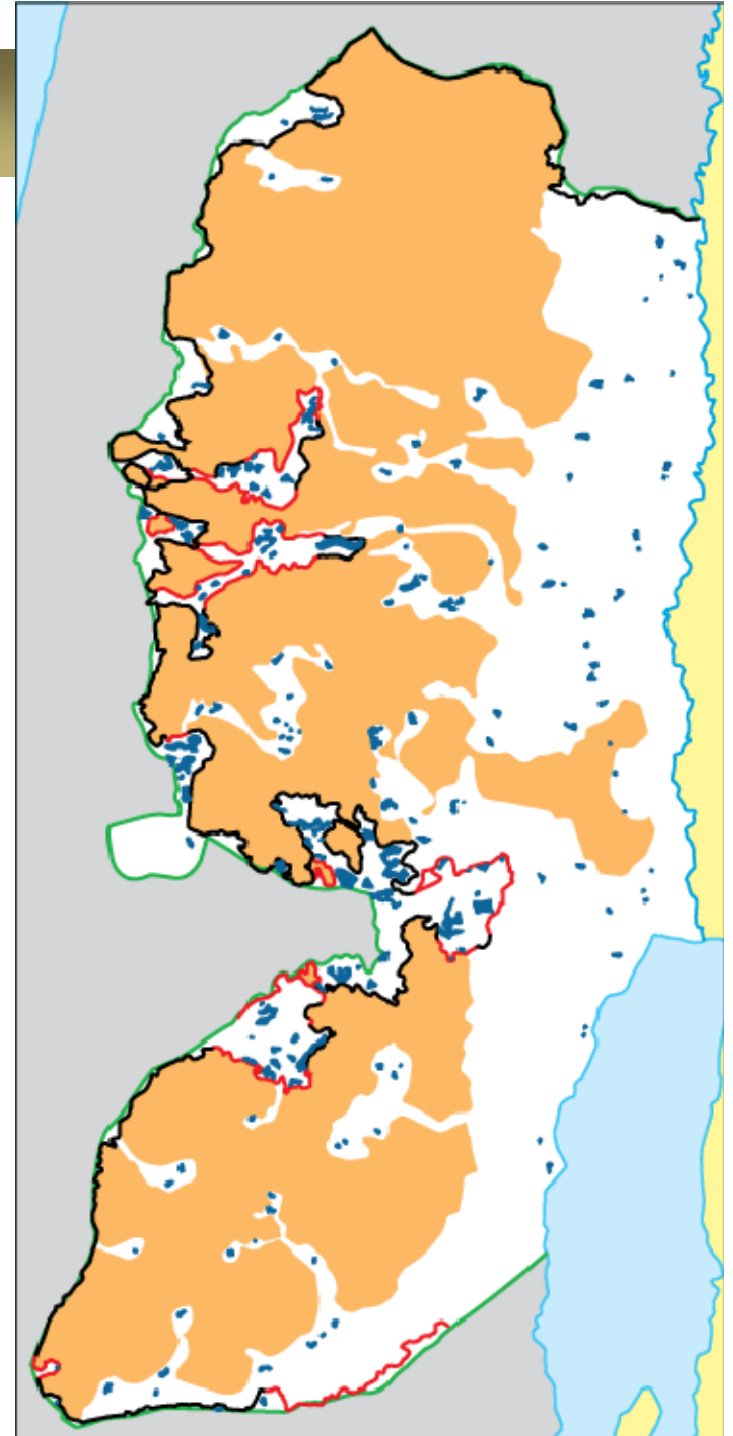
- *End to settlement **construction***
- *End to **planning** / **authorization***
- *End to **financial incentives***
- *End to **land confiscations***
- *End to **influx of new settlers***



The Road Map

Settlement Freeze 'Loopholes'

- “Reigning in unchecked growth”
= *continued expansion in EJ and “blocs”*
- “No new settlements”
= *existing settlements & “neighborhoods”*
- “Natural growth”
= *settlement growth 3x higher than Israel*
- “No land confiscation for settlements”
= *confiscation for wall, roads, etc.*
- “No expansion beyond construction line”
= *unlimited ‘upward’ expansion*



The Road Map

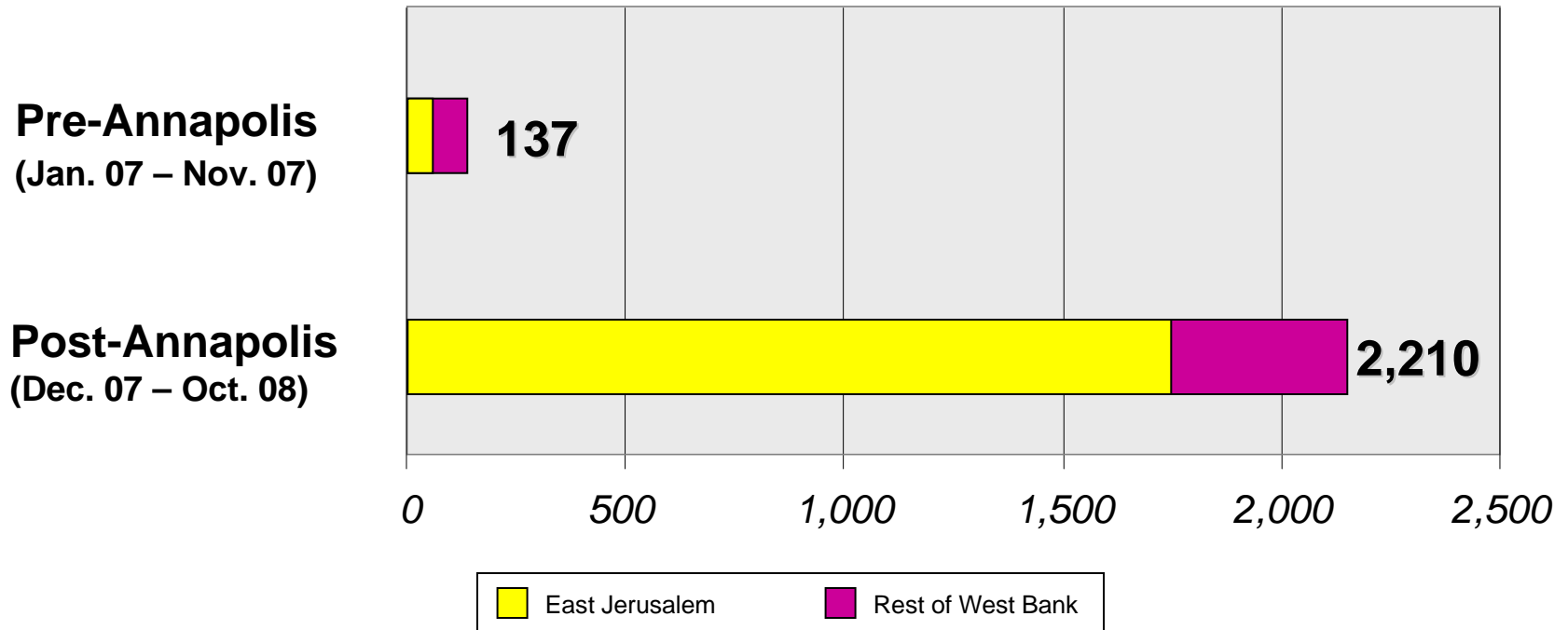
Jerusalem Institutions



- Orient House
- Jerusalem Arab Chamber of Commerce
- Center for Micro-Development Projects
- Land Research Center
- Prisoners Club
- Department for Prisoners & Ex-Prisoners
- High Tourist Council
- MDAA Institute

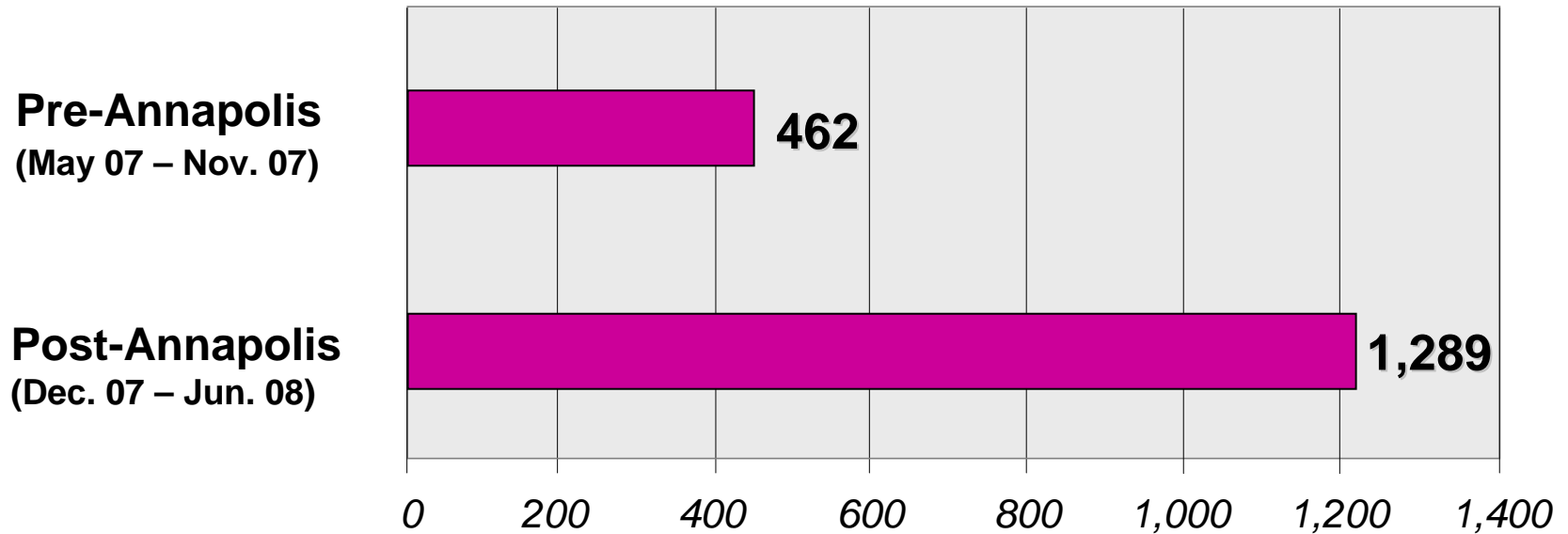
Post-Annapolis Update

Settlement Housing Units Tendered



Post-Annapolis Update

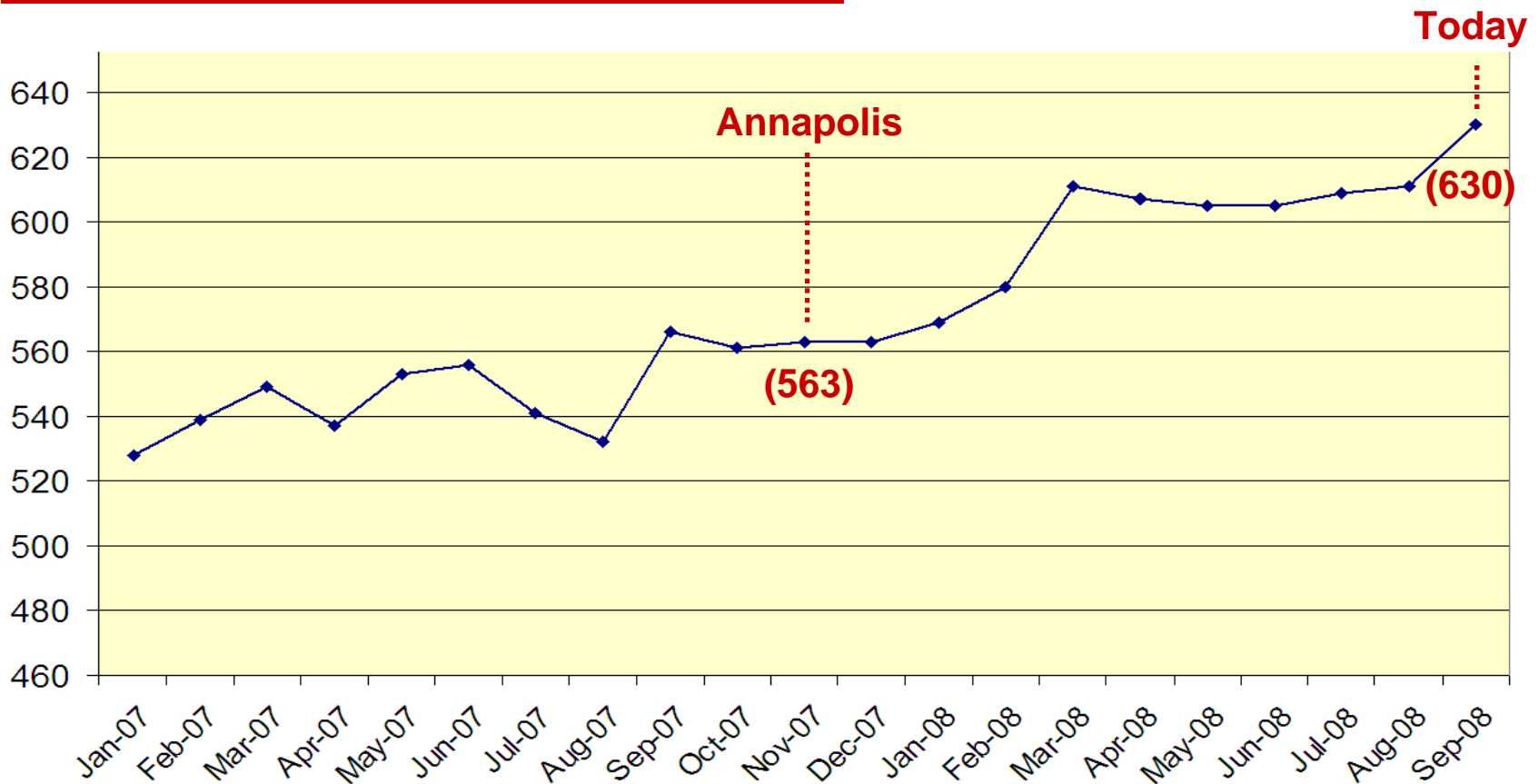
Building Permits*



** Private construction only, not including settlements in East Jerusalem.*

Post-Annapolis Update

Access & Movement Restrictions



SOURCE: UN-OCHA

Security Arrangements

Requirements:

- Full military withdrawal
- Effective Palestinian security force
- Peaceful relations, regional cooperation
- International presence

Obstacles:

- Overriding Israeli military presence/control
- Insistence on “demilitarized state”
- Interference / limitations on Pal. security

