

PLO Negotiations Affairs Department

# Israel's Settlement Enterprise

## *What Can and Should Be Done*



PALESTINE LIBERATION ORGANIZATION  
Negotiations Affairs Department  
Negotiations Support Unit

# TODAY'S PRESENTATION

- Settlements are the **single greatest threat** to the establishment of a sovereign & viable Palestinian state.
- There is growing consensus that a **real settlement freeze is key** to protecting the two-state solution and the peace process.
- The international community **can and should** take concrete measures against ongoing settlement activity.

# I. Facts on the Ground

## Israel's Settlement Enterprise

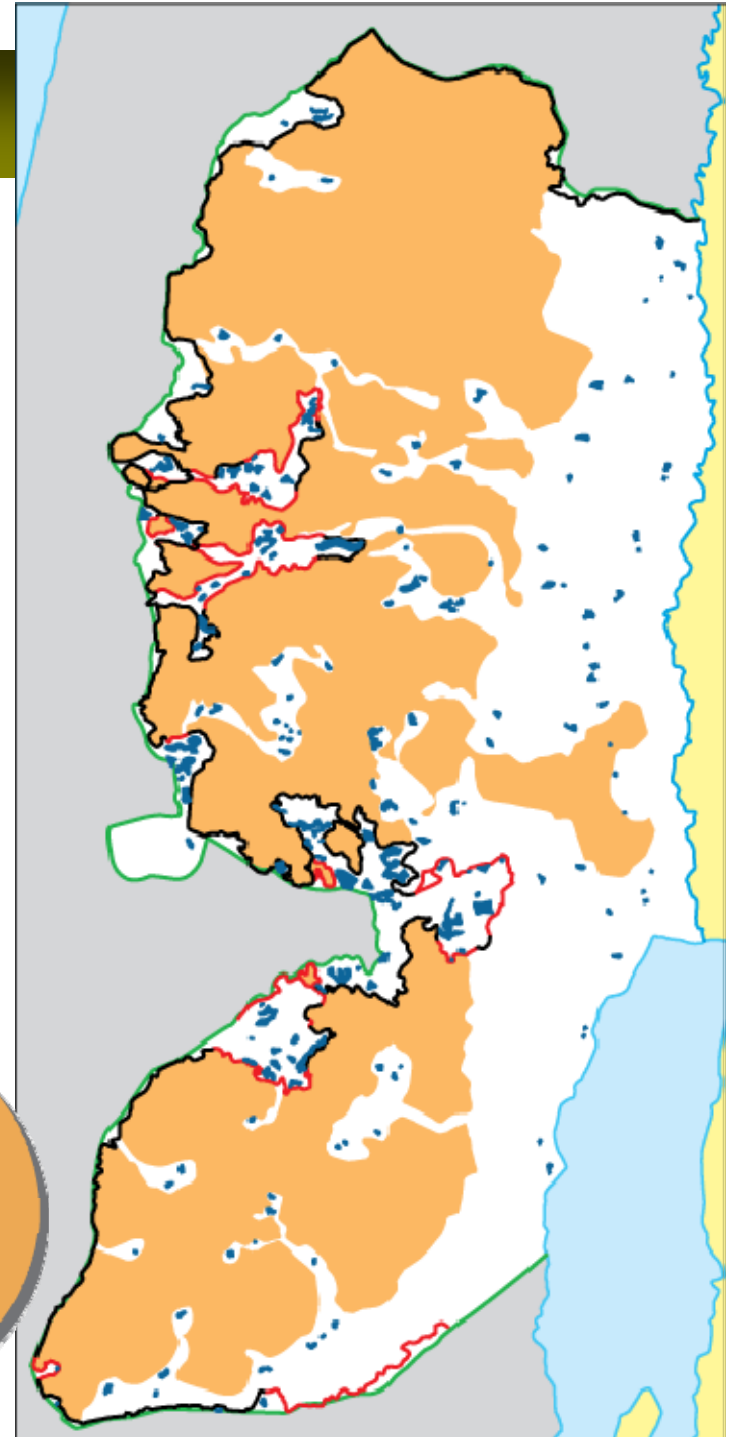
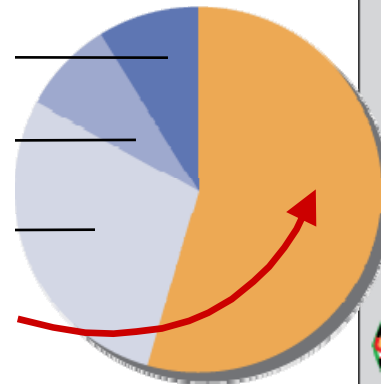
1. Settlements
2. The Wall (and its regime)
3. Settler / by-pass roads
4. Movement restrictions

WB land west of Wall: **9.0%**

Settlement areas east of Wall: **8.0%**

Jordan Valley settlement control: **28.5%**

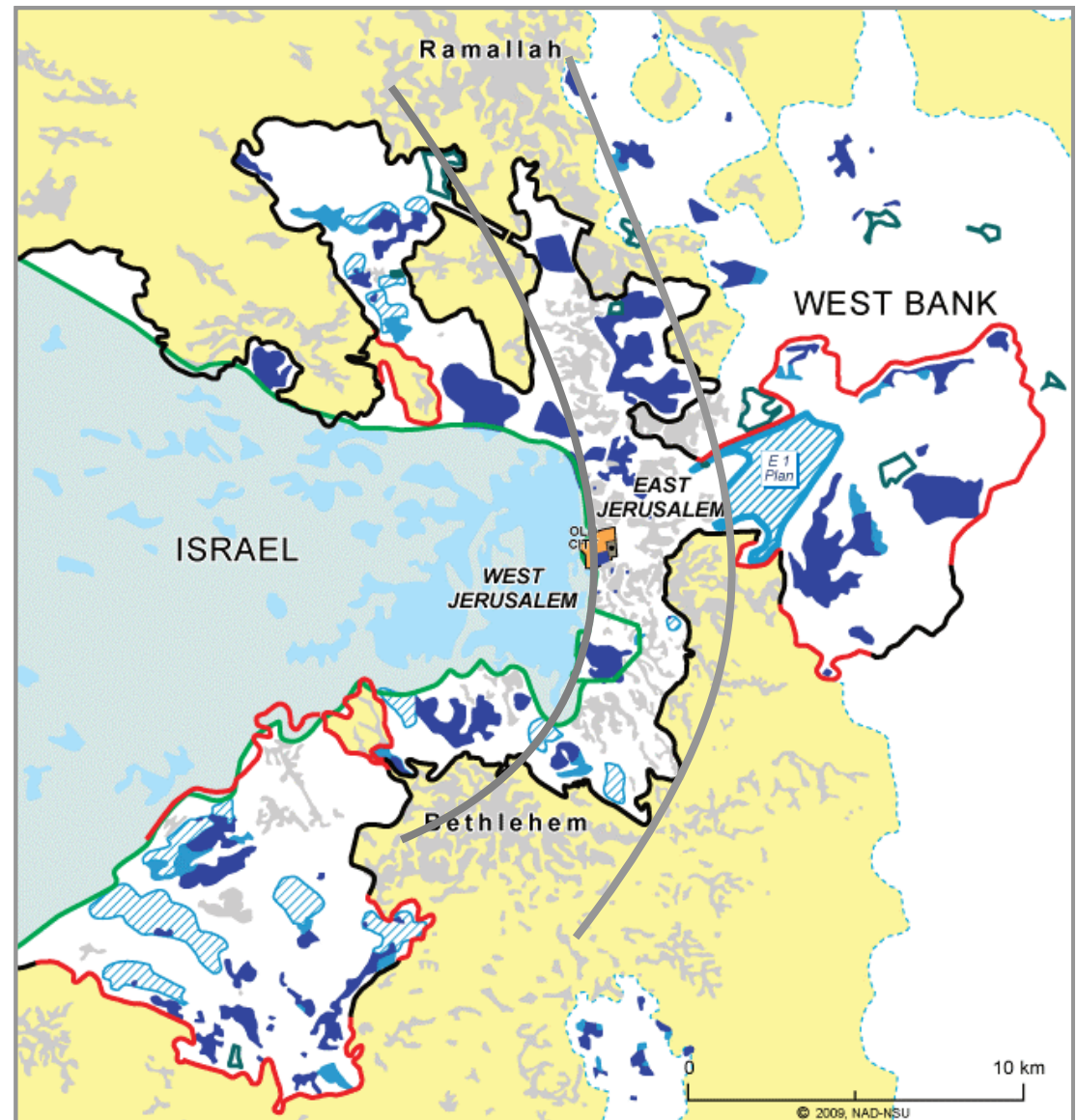
Area remaining for Palestinians: **54.5%**



# I. Facts on the Ground

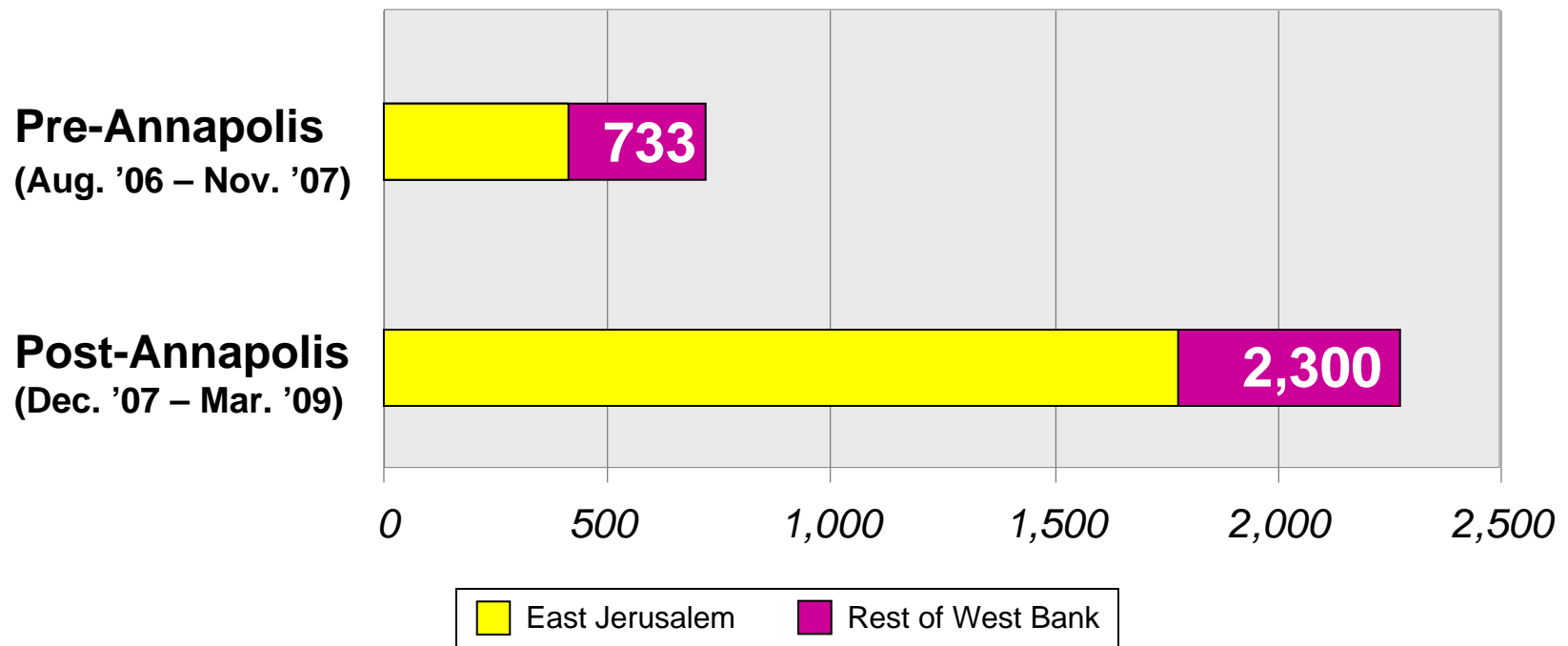
## East Jerusalem

- Restricts natural growth
- Internally fragmented
- EJ severed from WB
- WB severed in two



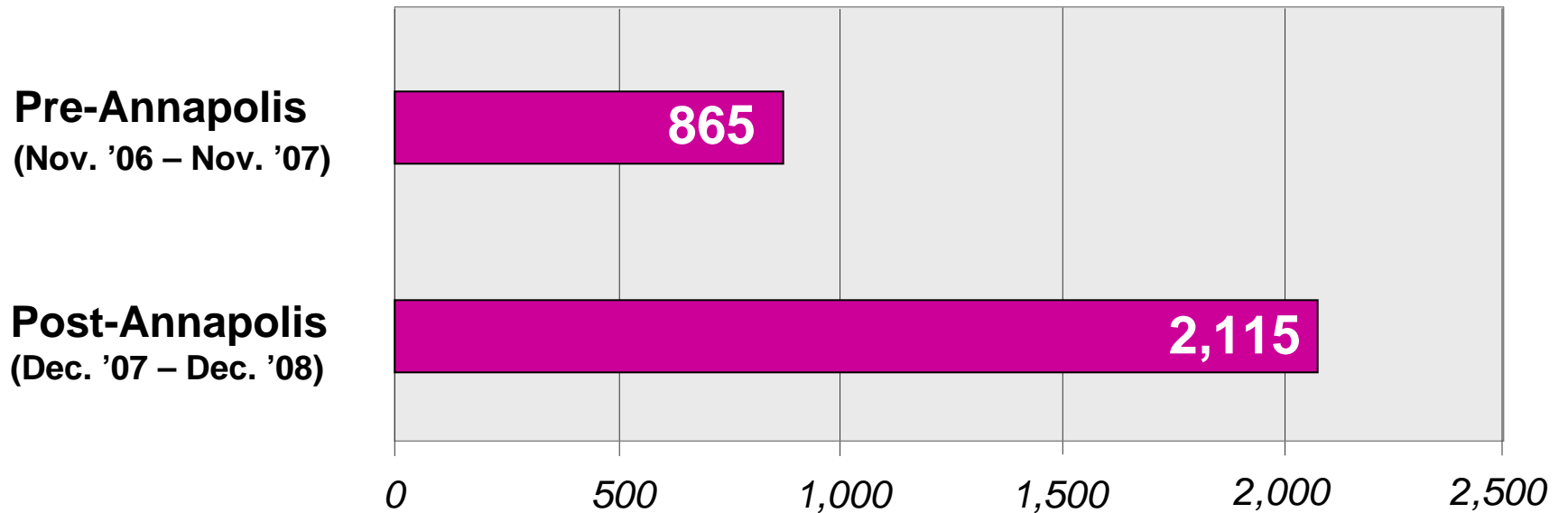
# I. Facts on the Ground

## Settlement Housing Units Tendered



# I. Facts on the Ground

## Building Permits\*

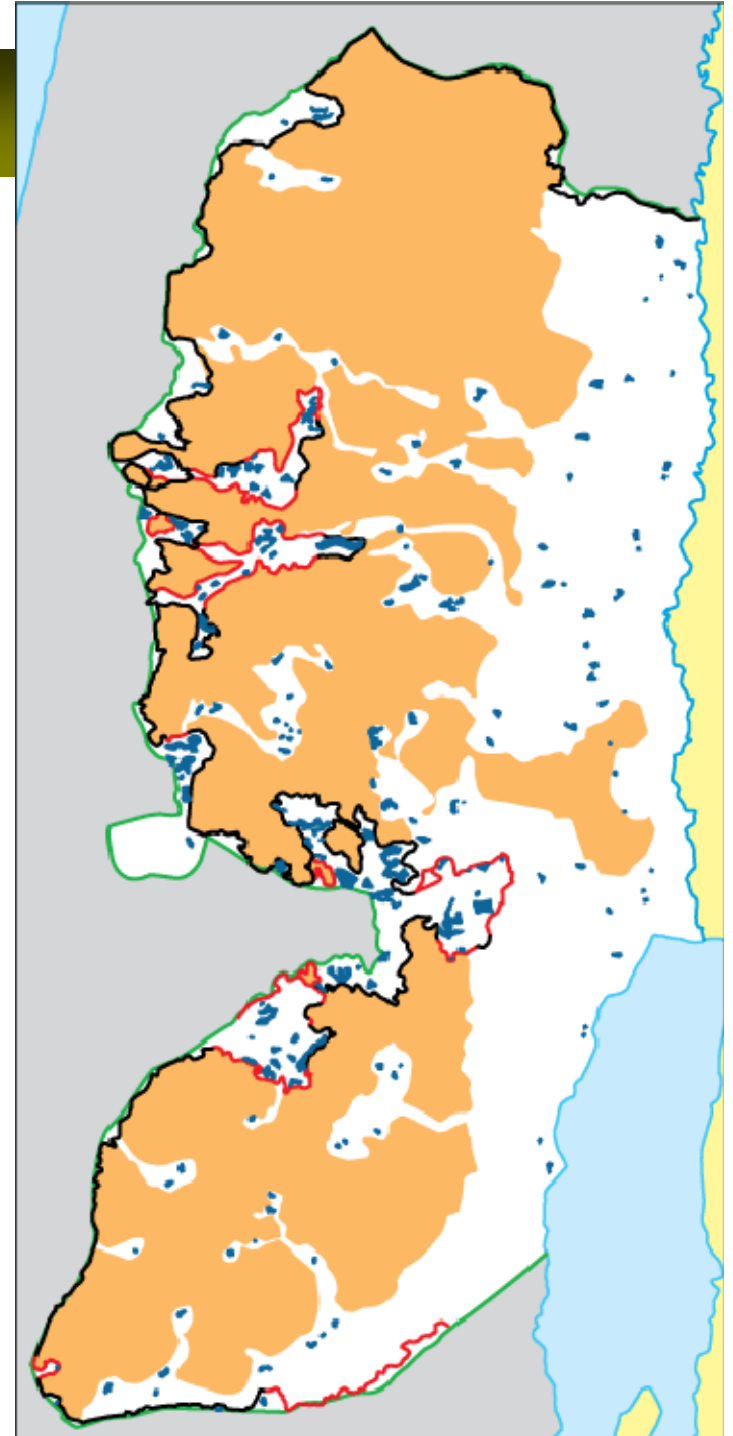


\* Private construction only, not including settlements in East Jerusalem.

## II. Settlement Freeze

### Past & Present 'Loopholes'

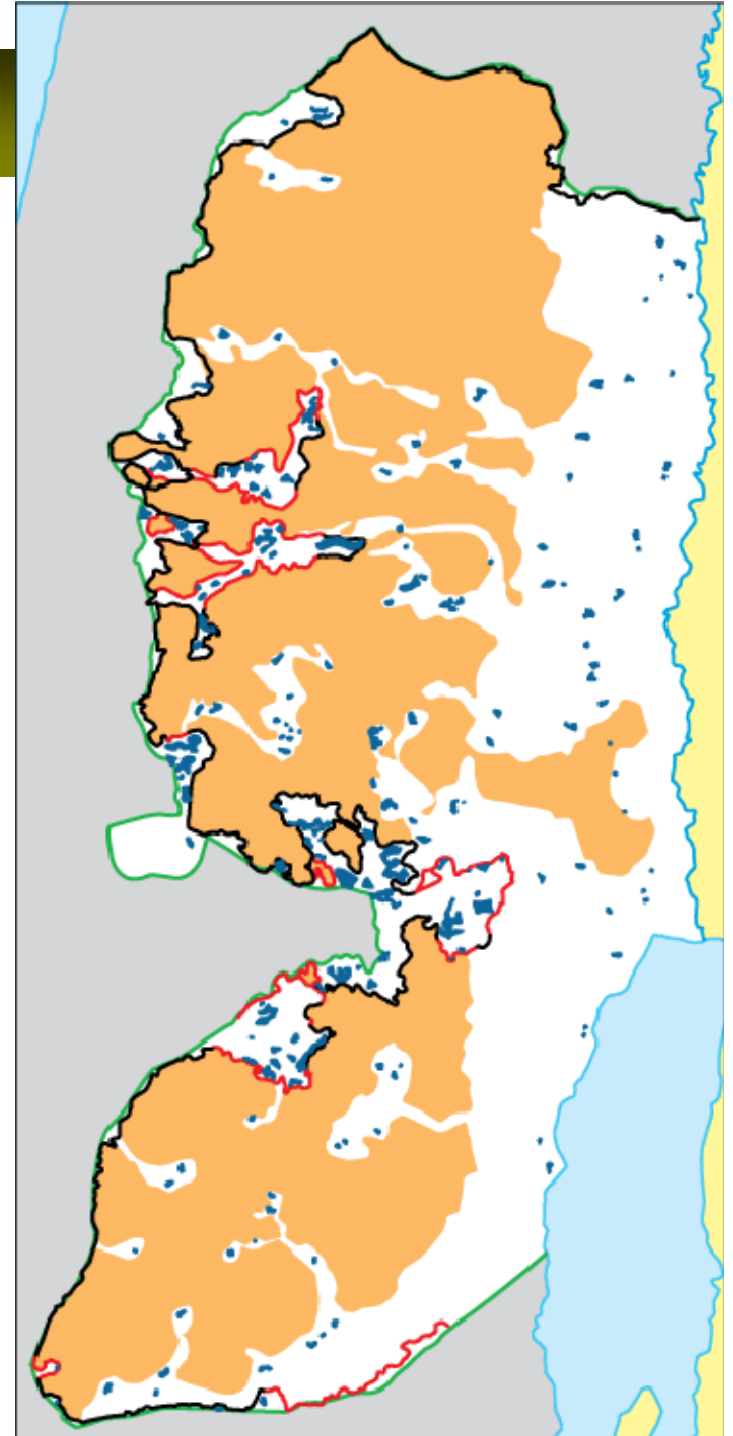
- “No new settlements”  
= new “neighborhoods”
- “Natural growth”  
= settlement growth 3x Israel
- “No land confiscation for settlements”  
= confiscation for wall, roads, etc.
- “No expansion beyond construction line”  
= unlimited ‘upward’ expansion
- “Projects in the pipeline”  
= 10,000s of units already planned



## II. Settlement Freeze

### Elements of a Genuine Freeze

- End to settlement **construction**
- End to **planning / authorization**
- End to **financial incentives**
- End to **land confiscations**
- End to **influx of new settlers**





# III. Third Party Responsibility

## ➤ Political

- *Road Map obligations*
- *Viability of two-state solution*

## ➤ Legal

- *Duty of non-recognition*
- *Duty of non-assistance*

*“Israeli settlements in the Occupied Palestinian Territory, including East Jerusalem, have been established in breach of international law...”*

*All States are obliged not to render aid or assistance in maintaining the situation created by construction of the Wall.”*

— ICJ Advisory Opinion on the Wall (July 2004)



# III. Third Party Responsibility

## Government:

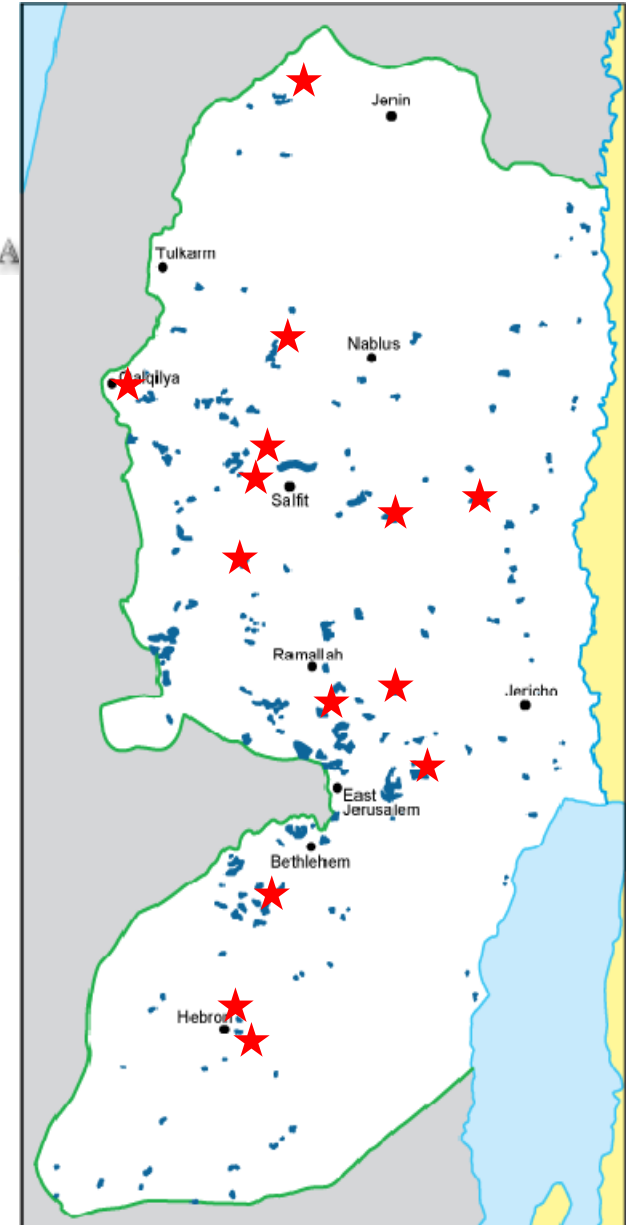
- Foreign aid
- Donor-funded projects

## Non-profit:


- Deny charitable status

## Private:

- Business and investment
  - *Exclude from government pension funds*
  - *Condition eligibility for public contracts*
  - *Withhold loans, credit guarantees, etc.*
  - *Advisory on land sales / leases*



# III. Third Party Responsibility



**AMANA**  
The YESHA Settlement  
Organization  
invites you

*to walk in the footsteps  
of Avraham Avinu*

**Support Israel, Buy a Home in Yesha, Israel!**

Come learn how you can own a house and provide growth of  
the Zionist dream in Jewish communities.

Amana will reliably manage, rent and maintain your home.  
**Your investment will be insured, protected and 100% legal.**

**Sunday March 18, 2007**

9:30 - 11:00 AM - Chabad Central Shul, Rabbi Moishe Denburg, 17950 Military Trail, Boca Raton  
12:00 - 1:30 PM Boca Tov Restaurant, and Kollel, Rabbi Looks,  
21065 Powerline in the back of Boca Grove Ctr., 2nd Floor  
4:00 - 5:30 PM - The Shul, Rabbi Lipskar, 9540 Collins Ave. N. Miami Beach

**Larry Segal • 754-234-2582 • LSEGAL@BELLSOUTH.NET**

alonf@amana.org.il 1-866-278-5144 toll free to Israel nurit@amana.org.il

103762

# III. Third Party Responsibility

## Government:

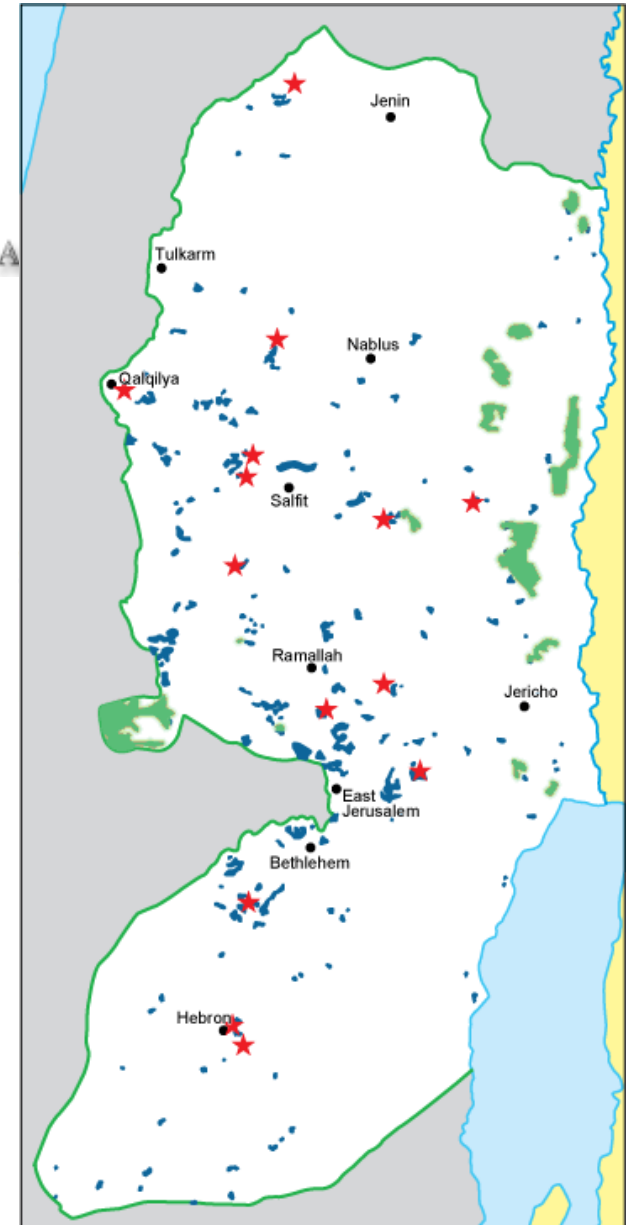
- Foreign aid
- Donor-funded projects

## Non-profit:

- Deny charitable status

## Private:

- Trade
  - *Ban settlement products altogether*
  - *Exclude from existing trade agreements*
  - *Exclude from new trade agreements*
  - *Ensure proper labeling*





# CONCLUSION

- Settlements are the **single greatest threat** to the establishment of a sovereign & viable Palestinian state.
- There is growing consensus that a **real settlement freeze is key** to protecting the two-state solution and the peace process.
- The international community **can and should** take concrete measures against ongoing settlement activity.



**Bank**

# TODAY'S PRESENTATION

**PART I:** 'Facts on the Ground'

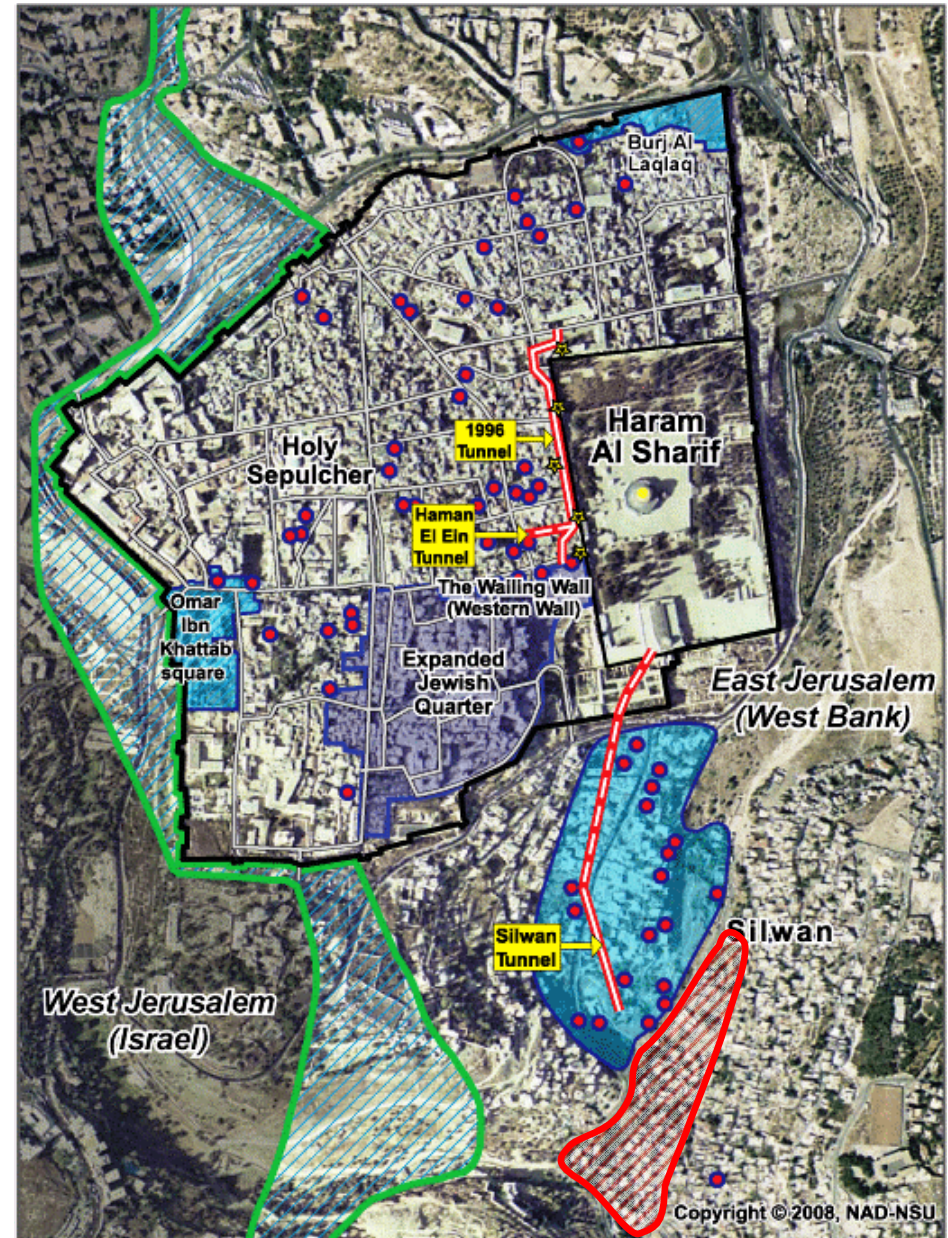
**PART II:** Defining a Settlement Freeze

**PART III:** Third Party Responsibility

# I. Facts on the Ground

## Old City of Jerusalem

- *Settlement expansion plans*
- *Excavations around Haram*
- *Home demolitions (Silwan)*





# III. Third Party Responsibility

## Government:

- Condition foreign aid to Israel on sett. freeze
- Ensure donor projects do not reinforce settlements

## Non-profit:

- Deny charitable status

## Private:

- **Business and investment**
  - *Exclude from government pension funds*
  - *Condition eligibility for public contracts*
  - *Withhold loans, credit guarantees, etc.*
  - *Advisory on land sales / leases*
- **Trade**
  - *Ban settlement products altogether*
  - *Exclude from trade agreements*
  - *Ensure proper labeling*

# III. Third Party Responsibility

## Government:

- Condition foreign aid to Israel on sett. freeze
- **Ensure donor projects do not reinforce settlements**

## Non-profit:

- Deny charitable status

## Private:

- **Business and investment**
  - *Exclude from government pension funds*
  - *Condition eligibility for public contracts*
  - *Withhold loans, credit guarantees, etc.*
  - *Advisory on land sales / leases*
- **Trade**
  - *Ban settlement products altogether*
  - *Exclude from trade agreements*
  - *Ensure proper labeling*

# III. Third Party Responsibility

## Donor Projects & Settlements

- **Legitimizing Israeli violations**
  - *Legitimizing Israeli sovereignty claims*
  - *Contouring or accommodating settlements*
  - *Patronage of settlement businesses*
  - *Legitimizing movement restrictions*
  
- **Relieving Israel of its responsibilities**
  - *Additional costs due to access & movement restrictions*
  - *Reconstruction and repair of property*